



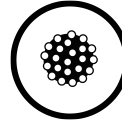
PELOBiotech

More than Competence⁴ Cells

PELOBIOTECH GmbH
Am Klopferspitz 19
82152 Planegg

(P) +49 89 517 286 9-0
(F) +49 89 517 286 59-88
(Email) info@pelobiotech.com

3D - Models ready-to-use



3D Skin Model

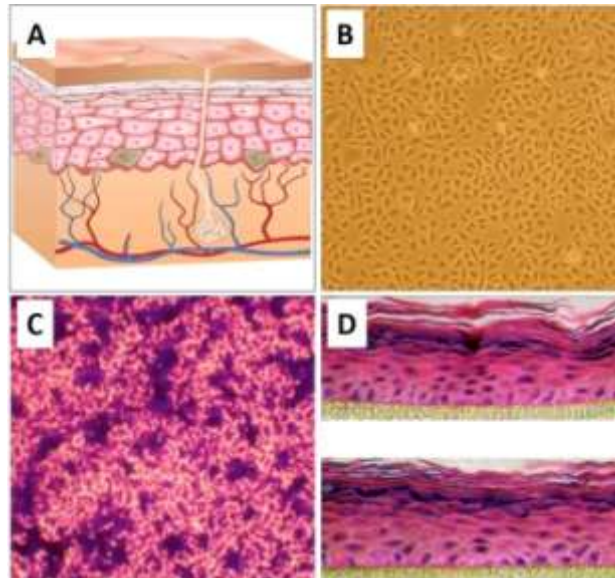
What is CellApplications' 3D Skin Model? It is a highly physiological, three-dimensional cellular system of Human Epidermal Keratinocytes (HEK) for in vitro studies, offering an excellent cellular system to examine aspects of epithelial function and disease, particularly those related to skin biology and toxicology.

Advantage: Basic science and pharmaceutical researchers use the 3D Skin Model to replace animal tests for the assessment of skin irritation due to chemicals, skin-cream-based drugs and cosmetics.

Application: CAI's Skin Model can also help avoid misclassification of chemicals and skin corrosion observed in animal systems (1, 2). Other applications include phototoxicity, percutaneous absorption & penetration, wound healing and metabolism. The cells are grown and differentiated into a stratified squamous epithelium on PCF inserts with a liquid/air interface. Contact us for more information.

- 1) Eun & Nam, Exog Dermatol, 2:1-5 (2003)
- 2) York et al., Contact Dermatitis, 34:204 (1996)

- A. Depiction of Human Skin.
- B. Human Epidermal Keratinocytes (HEK) at ~80% confluency.
- C. Crystal Violet Staining.
- D. Hematoxylin & Eosin Staining of HEK differentiated into stratified squamous epithelium after 14 days.



The 3-D skin model is available as 12 or 24 well do-it-yourself-kit. The cells will be delivered cryopreserved.



Source: CellApplications.

www.pelobiotech.com



HOW TO ORDER: CALL: +49 (0)89 517 286 59-0