

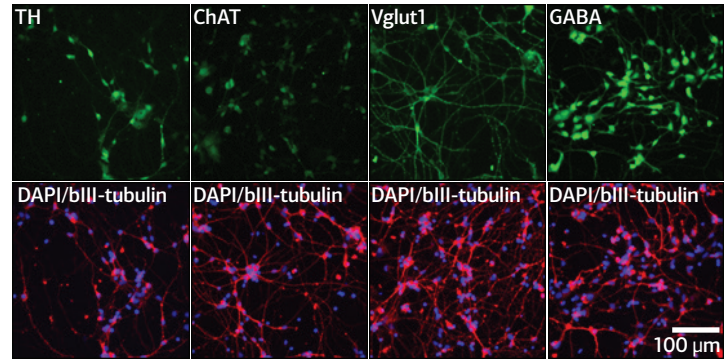
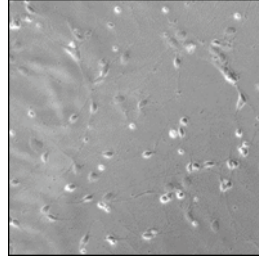
- The world's first commercial human iPSC derived neurons
- Typical neuron markers are expressed
- Release and reuptake of dopamine are detected



ReproNeuro is the world's first human iPS cell derived neuron.
Expression of neuron markers and dopamine release/reuptake are observed.

Neurons are obtained after a 14-day culture

Day 14



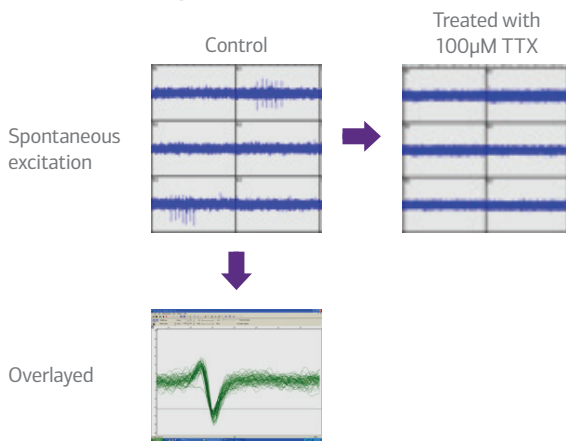
ReproNeuro™ :

- Frozen cells 3×10^6 cells*
- Thawing Medium
- Maturation Medium
- Additive
- Coat (Coating Solution)
- Dummy vial

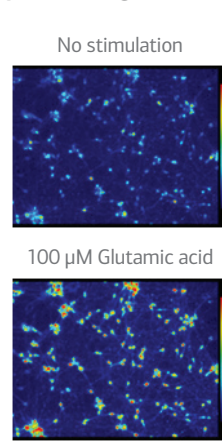
*Cells sent in 1 vial, different from photo

Functions as dopaminergic neurons

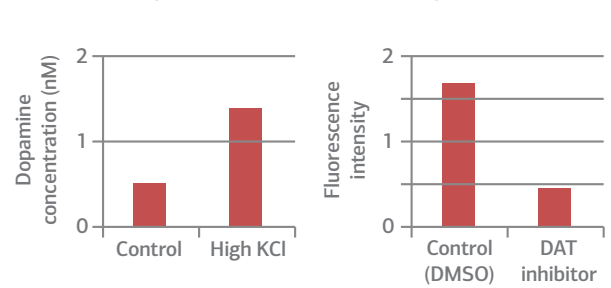
Spontaneous excitation



Response to glutamic acid



Dopamine release and reuptake



Product No.	Product	No. of Included cells	Price
RCESDN001	ReproNeuro™	human iPS cell-derived neural progenitors 3×10^6 cells/vial + Reagents	Ask
RCESDN002	ReproNeuro™ Small Pack	human iPS cell-derived neural progenitors 3×10^5 cells/vial + Reagents	Ask
RCESDN301	ReproNeuro™ Maturation Medium	Culture medium kit for extended culture of RCESDN001 ReproNeuro Maturation Medium (40mL), ReproNeuro Additive (520µL)	Ask
RCESDN302	ReproNeuro™ Maturation Medium Small	Culture medium kit for extended culture of RCESDN002 ReproNeuro Maturation Medium (5mL), ReproNeuro Additive (65µL)	Ask
RCESDN303	ReproNeuro™ Thawing Medium (30mL)	Thawing Medium for RCESDN001/002 for additional need	Ask
RCESDN304	ReproNeuro™ Coat (150µL)	Coating Solution for RCESDN001/002 for additional need	Ask

Visit www.reprocell.com/en for:

- Up-to-date information on ReproNeuro
- Handling and assay procedure: instruction movies available
- Detailed information about kit contents and refill reagents



AMERICAS-HUMAN TISSUE

9000 Virginia Manor Road, Suite 207
Beltsville, MD 20705, USA
Tel: (301) 470-3362
Email: info@bioserve.com
www.bioserve.com



AMERICAS-REAGENTS

51 Moulton Street
Cambridge, MA 02138, USA
Tel: (617) 245-0000
Email: info@stemgent.com
www.stemgent.com



ASIA PACIFIC

KDX Shin-yokohama381 Bldg9F
3-8-11, Shin-yokohama, Kohoku-ku, Yokohama,
Kanagawa 222-0033, Japan
Tel: +81 45 475 3887
Email: info_jp@reprocell.com
www.reprocell.com/en



EUROPE

NETPark Incubator
Thomas Wright Way
Sedgefield, Co. Durham
TS21 3FD, UNITED KINGDOM
Tel: +44 (0)1740 625 526
Email: info@reinnervate.com
www.reinnervate.com