

- Robust CYP activity
- Expression of transporters (NTCP and OATP1B1, etc.)
- Longer retention of CYP activity
- Hepatotoxic response similar to primary hepatocytes
- CYP induction assay and hepatotoxicity assay services available



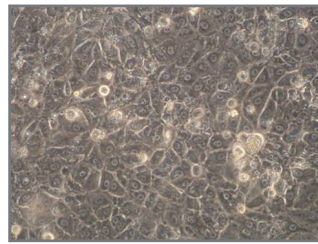
Basic characteristics of ReproHepato



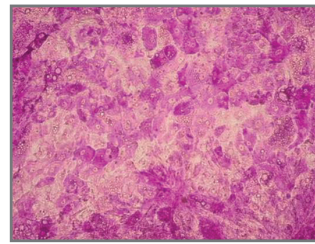
Kit contents:

- Frozen cells 8.25×10^6 cells/vial
- Thawing Medium
- Maintenance medium & supplement
- Assay Medium & supplement
- Dummy vial

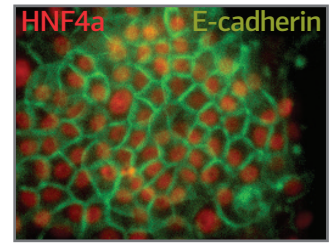
Bright-field



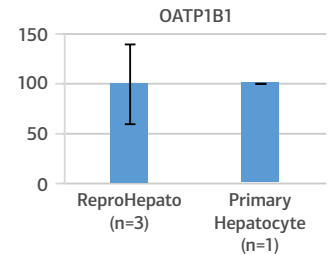
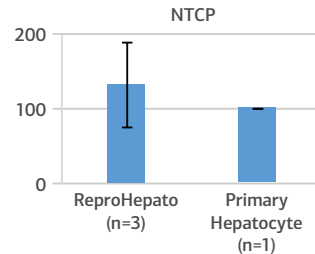
PAS staining



Immunostaining



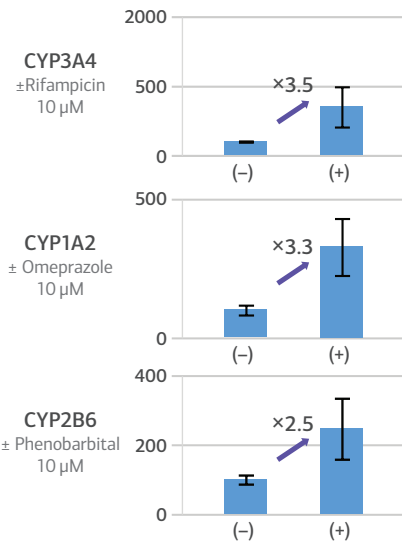
Gene expression (qPCR)
Average \pm SD
(% : Primary hepatocyte is normalized to 100)



Induction capability of CYPs

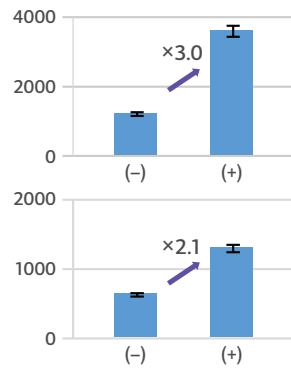
Gene expression (qPCR)

% : No induction is normalized to 100



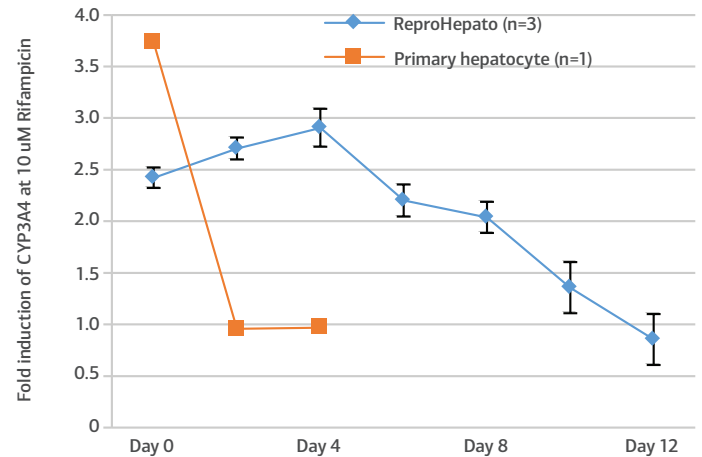
CYPs activity

RLU



The inserted number indicates a fold induction of each CYP. Average \pm SD, n=3

Longer retention of CYP activity



Induction activity of ReproHepato is maintained longer (ca. Day 8) than primary hepatocyte. Rifampicin added two days before each day. Average \pm SD

Hepatotoxicity (CellTiter-Glo® Luminescent Cell Viability Assay: Promega)

IC50 (μ M)	Acetaminophen	Amiodarone	Cyclophosphamide	Diclofenac	Flutamide
ReproHepato	2,525	0.5	3,030	50.5	5.1
Human hepatocytes*	6,500	10	8,140	300	75
Human hepatic cell line A*	7,500	40	No Data	No Data	50
Human hepatic cell line B*	29,755	79	22,027	399	231
Rat hepatocytes*	14,014	38	3,657	263	10

The response to the compounds of hepatotoxicity is similar to primary hepatocytes.

* Data is cited from several papers.



AMERICAS-HUMAN TISSUE

9000 Virginia Manor Road, Suite 207
Beltsville, MD 20705, USA
Tel: (301) 470-3362
Email: info@bioserve.com
www.bioserve.com



AMERICAS-REAGENTS

51 Moulton Street
Cambridge, MA 02138, USA
Tel: (617) 245-0000
Email: info@stemgent.com
www.stemgent.com



ASIA PACIFIC

KDX Shin-yokohama381 Bldg9F
3-8-11, Shin-yokohama, Kohoku-ku, Yokohama,
Kanagawa 222-0033, Japan
Tel: +81 45 475 3887
Email: info_jp@reprocell.com
www.reprocell.com/en



EUROPE

NETPark Incubator
Thomas Wright Way
Sedgefield, Co. Durham
TS21 3FD, UNITED KINGDOM
Tel: +44 (0)1740 625 526
Email: info@reinnervate.com
www.reinnervate.com