

Medium for cryopreservation of ES and iPS cells

Overview

ReproCELL's ReproCRYO DMSO-Free Cryopreservation Medium provides researchers with a low toxicity, high viability cryopreservation medium for human ES (embryonic stem) and iPS (induced pluripotent stem) cells. Compared to other freezing media, ReproCRYO DMSO-Free medium reduces DMSO-associated cell toxicity and provides viabilities of >60% upon thawing.

Key Benefits

- High recovery compared to DMSO-containing cryopreservation media
- Chemically-defined, DMSO-free, xeno-free composition for clinically-compatible studies

Features

- Human stem cells cryopreserved in ReproCRYO DMSO-Free show 60-80%+ viability with no loss in growth rate compared to subcultured cells (Figure 1)
- ReproCRYO DMSO-Free cryopreservation maintains the pluripotency of human stem cells upon thawing (Figure 2)
- ReproCRYO DMSO-Free is compatible with standard protocols

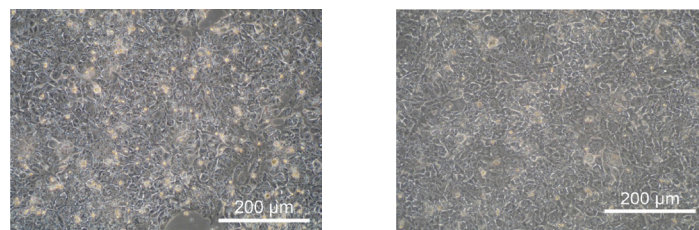


FIGURE 1. Phase contrast images of iPS cells subcultured or thawed after cryopreservation with ReproCRYO DMSO-Free

Comparison

	PRODUCT A	REPROCYRO DMSO-FREE
DMSO-free		✓
Xeno-free		✓
Chemically Defined	✓	✓
Viability	30-80%	60-80%

OCT3/4/DAPI NANOG/DAPI SSEA4/DAPI TRA1-81/DAPI

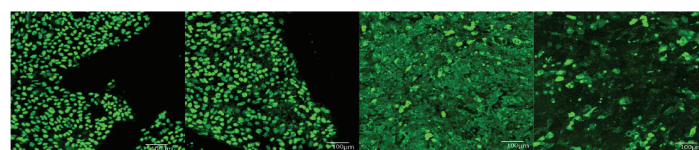


FIGURE 2. Human iPS cells cryopreserved with ReproCRYO DMSO-Free retain expression of pluripotency markers after thawing

Product Ordering Information

ReproCELL ReproCRYO™ DMSO-free

PRODUCT NAME	QUANTITY	CAT. NO
ReproCELL ReproCRYO™ DMSO-free	50 mL	TBD

Related Products

PRODUCT NAME	QUANTITY	CAT. NO
ReproCELL Freezing Medium	25 mL	RCHEFM001
Stemgent CryoStem™ Freezing Medium	50 mL	01-0013-50
Revive Organtech CRYO-GOLD Cryopreservation Medium	100 mL	RO-10003-01



AMERICAS-HUMAN TISSUE
 9000 Virginia Manor Road, Suite 207
 Beltsville, MD 20705, USA
 Tel: (301) 470-3362
 Email: info@bioserve.com
www.bioserve.com



AMERICAS-REAGENTS
 51 Moulton Street
 Cambridge, MA 02138, USA
 Tel: (617) 245-0000
 Email: info@stemgent.com
www.stemgent.com



ASIA PACIFIC
 KDX Shin-yokohama381 Bldg9F
 3-8-11, Shin-yokohama, Kohoku-ku, Yokohama,
 Kanagawa 222-0033, Japan
 Tel: +81 45 475 3887
 Email: info_jp@reprocell.com
www.reprocell.com/en



EUROPE
 NETPark Incubator
 Thomas Wright Way
 Sedgefield, Co. Durham
 TS21 3FD, UNITED KINGDOM
 Tel: +44 (0)1740 625 526
 Email: info@reinnervate.com
www.reinnervate.com